

Component Replacement

- electrical -



Xperia™ XZ Compact
G8441

CONTENTS

1	Replaceable Components	3
2	Tools	5
3	Component Placing	7
4	Additional Repair Info	9
5	Revision History	17

For general information about electrical repair related issues, refer to 1220-1336: Generic Repair Manual - electrical - (RE4252).

Baking prior to repair is required, if the board have been exposed to air more than 12 hours from PWB package opening. Too long exposure time increase the level of moisture in PWB and the PWB could delaminate during repair process and result in direct or latent failures and reduce reliability.

The boards shall be baked in 125°C ±5°C for 4 hours.

All Electrical components are RLC (Reversed Logistic Classification) level C, refer to the 3.4 Valid Spare Parts chapter in the Warranty Claim Instruction RE4249 about disposition of the parts.

Test after component replacement to refer to 1312-1738 G8441 Test Instructions - mechanical -.

Do not remove shield can lids (RF performance will be damaged).

If there are components located on right next to the component that intend to replace, protect those components with Kapton tape to avoid damages.

1 Replaceable Components

EXPLANATION OF ABBREVIATIONS USED IN THE COLUMN 'COMMENTS' BELOW

REPAIR METHOD

HA = Hot Air (removal & mounting)

ST = Soldering Tool (removal & mounting)

HA/ST = Hot Air for removal - Soldering Tool for mounting

BGA = BGA Station

BH = Bottom Heater

ADDITIONAL INFORMATION

⇒1 (2, 3, 4, etc.) = Proceed to 'Additional Repair Info' for further instructions in the indicated section(s).

Primary Side

Position	Component	Part no.	Comments
CN1300	Conn BtB Plug 4p HIROSE/BM22	1281-9973	HA+BH → 1
CN2201	Conn BtB Receptacle 14p BB35 series	1300-9427	HA+BH → 2
CN2601	Other Mech Part G84 shield clip	1308-1477	HA+BH → 3
CN4000	Card Conn SIM 2 in 1	1304-3910	HA+BH or BGA → 4
CN4001	Card Conn SIM	1305-0317	HA+BH or BGA → 5
CN4402	Conn Leaf Spring Plug 1p WH : 1.6+-0.2	1297-5833	HA+BH → 6
CN4403	Conn Leaf Spring Plug 1p WH : 1.6+-0.2	1297-5833	HA+BH → 6
CN4404	Conn Leaf Spring Plug 1p WH : 1.6+-0.2	1297-5833	HA+BH → 6
CN4452	Conn Leaf Spring Plug 1p WH : 1.6+-0.2	1297-5833	HA+BH → 7
CN4454	Conn Leaf Spring Plug 1p WH : 1.6+-0.2	1297-5833	HA+BH → 7
CN4455	Conn Leaf Spring Plug 1p WH : 1.6+-0.2	1297-5833	HA+BH → 6
CN4863	Conn Leaf Spring Plug 1p WH : 1.4+-0.2	1294-8163	HA+BH → 8
CN4868	Conn Leaf Spring Plug 1p WH : 1.4+-0.2	1294-8163	HA+BH → 8
CN4871	Conn Pogopin Plug 1p	1310-5256	HA+BH → 9
CN7000	Conn BtB Receptacle 40p IPEX NOVASTACK V Series	1298-2647	HA+BH → 10
CN7301	Conn BtB Receptacle 30p DDK, BB35	1306-9774	HA+BH → 11
CN9500	Conn BtB Receptacle 16p DDK, BB35S	1298-4253	HA+BH → 12
CN9503	Conn BtB Receptacle 14p BB35 series	1300-9427	HA+BH → 13
E7000	Shield Can Fence LCD BtB	1307-6469	HA+BH → 14
E7001	Shield Can Fence LCD BtB	1307-6469	HA+BH → 14
E7002	Shield Can Fence LCD BtB	1307-6469	HA+BH → 15
E7003	Shield Can Fence LCD BtB	1307-6469	HA+BH → 15
MC3001	Mic 3.5 Silicon G83	1306-8995	HA+BH → 16
MC3002	Mic 3.5 Silicon G83	1306-8997	HA+BH → 17

Replaceable Components

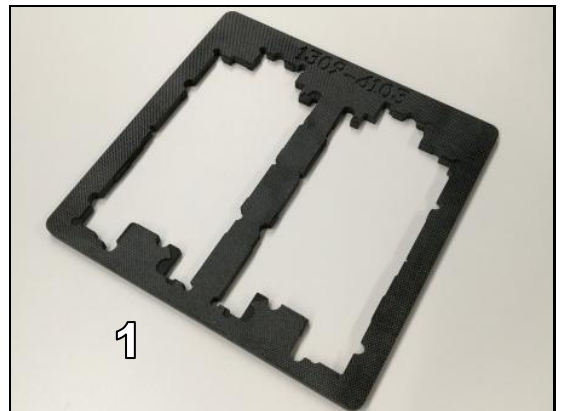
Secondary Side

Position	Component	Part no.	Comments
CN3503	Conn Leaf Spring Plug 1p WH : 0.8+-0.2	1294-8905	HA+BH → 1
CN3504	Conn Leaf Spring Plug 1p WH : 0.8+-0.2	1294-8905	HA+BH → 1
CN4411	Conn Coax Receptacle 1p	1287-3442	HA+BH → 2
CN4421	Conn Coax Receptacle 1p	1287-3442	HA+BH → 3
CN4611	Conn Coax Receptacle 1p	1287-3442	HA+BH → 4
CN4621	Conn Coax Receptacle 1p	1287-3442	HA+BH → 4
CN4651	Conn Leaf Spring Plug 1p WH : 2.6+-0.2	1294-5857	HA+BH → 5
CN4652	Conn Leaf Spring Plug 1p WH : 2.6+-0.2	1294-5857	HA+BH → 5
CN4653	Conn Leaf Spring Plug 1p WH : 0.8+-0.2	1294-8905	HA+BH → 5
CN4655	Conn Leaf Spring Plug 1p WH : 2.6+-0.2	1294-5857	HA+BH → 6
CN5103	Conn WtB Receptacle 2p	1206-4855	HA+BH → 7
CN7300	Conn BtB Receptacle 34p DDK BB35	1293-6188	HA+BH → 8
CN8000	Conn Leaf Spring Plug 1p WH : 0.8+-0.2	1294-8905	HA+BH → 9
CN8001	Conn Leaf Spring Plug 1p WH : 0.8+-0.2	1294-8905	HA+BH → 9
CN8006	Conn Coax Receptacle 1p	1287-3442	HA+BH → 10
CN8041	Conn Leaf Spring Plug 1p WH : 2.6+-0.2	1294-5857	HA+BH → 11
CN8042	Conn Leaf Spring Plug 1p WH : 2.6+-0.2	1294-5857	HA+BH → 11
CN8071	Conn Coax Receptacle 1p	1287-3442	HA+BH → 12
CN8650	Conn Leaf Spring 1p	1307-5977	HA+BH → 13
CN8651	Conn Leaf Spring 1p	1307-5977	HA+BH → 13

2 Tools

SPECIAL TOOL

1. PBA Soldering Fixture (1309-6103)



STANDARD TOOLS

1. Small Convection (Hot Air) Device



2. Soldering Iron



3. Soldering wick



Tools

4. Solder-wire



5. Solder-paste



6. Low Static Heat Protection Tape

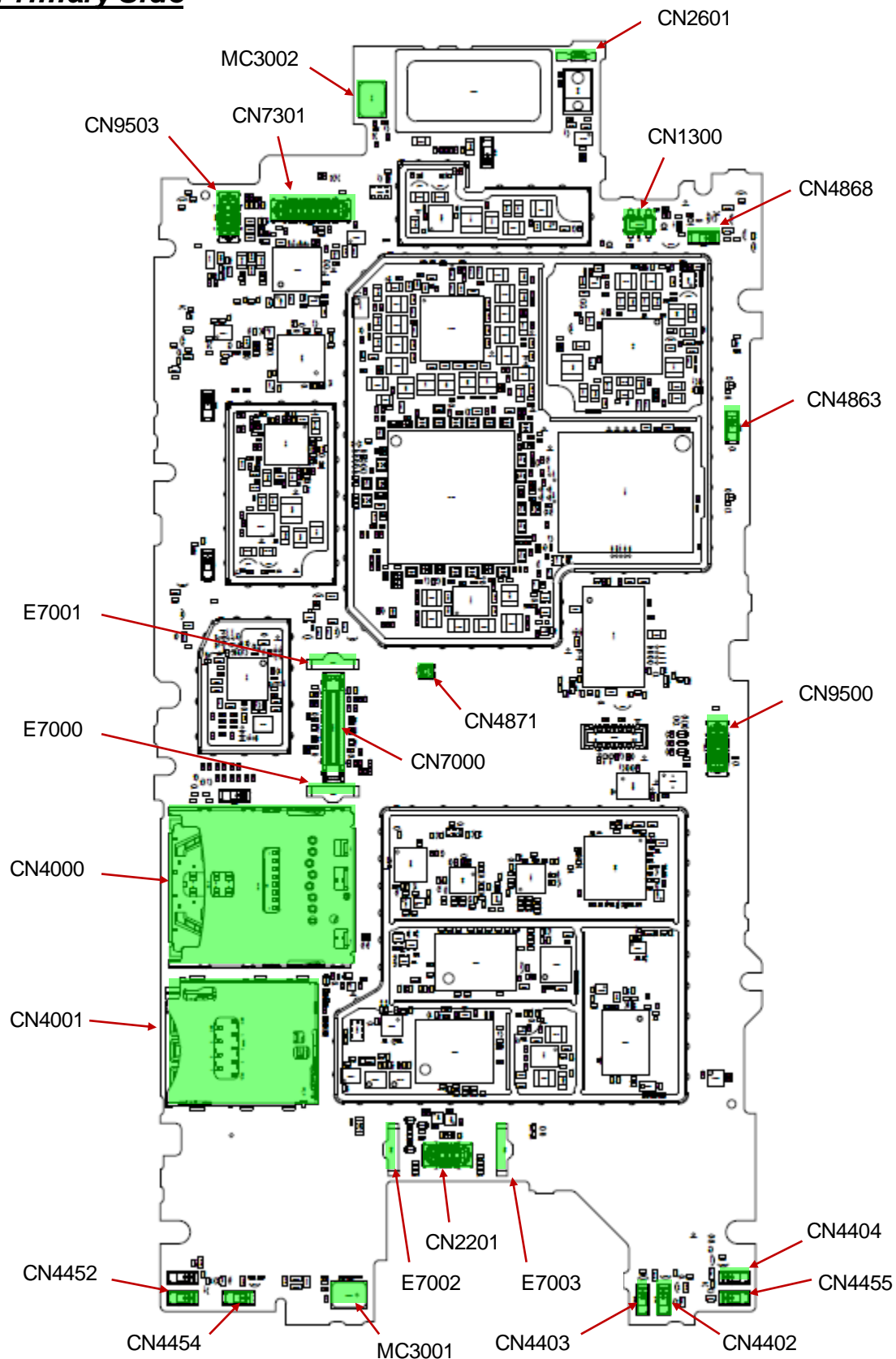


7. Flux



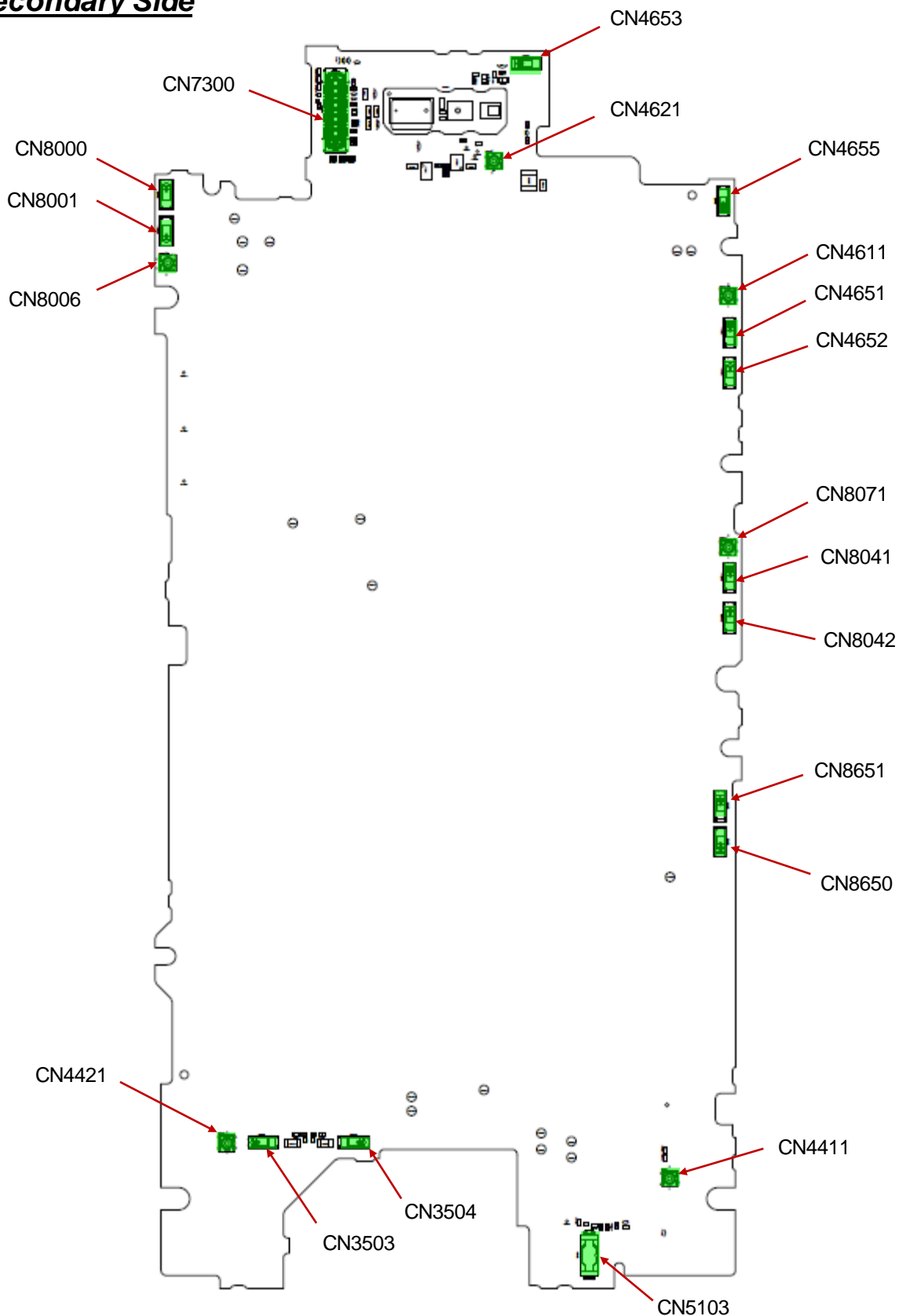
3 Component Placing

Primary Side



Component Placing

Secondary Side

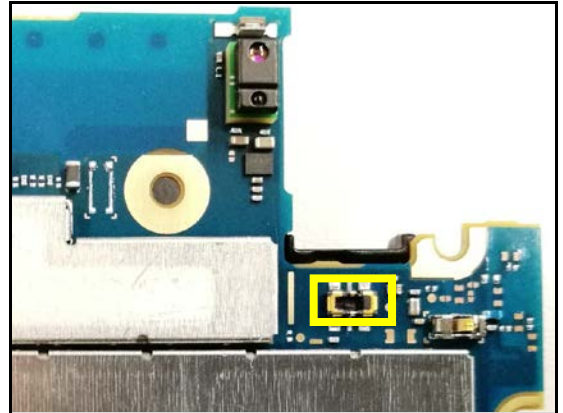


4 Additional Repair Info

Primary Side 1

CN1300

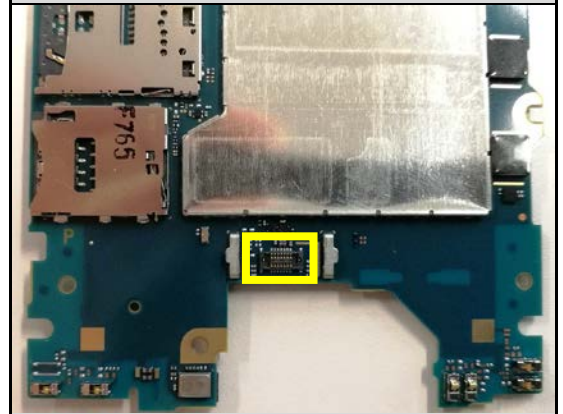
Replace if mechanical damaged (No Power, No Charge Battery).



Primary Side 2

CN2201

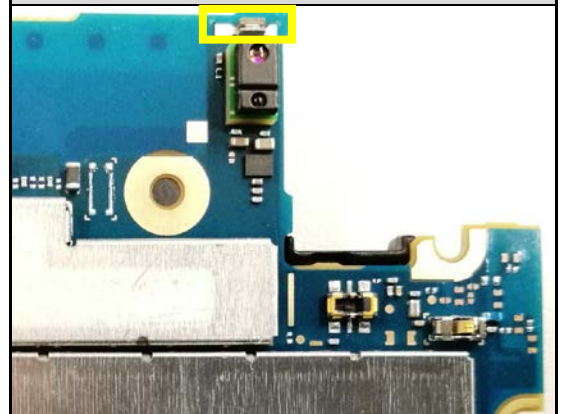
Replace if mechanical damaged (No Charge the Battery, No Data Transfer).



Primary Side 3

CN2601

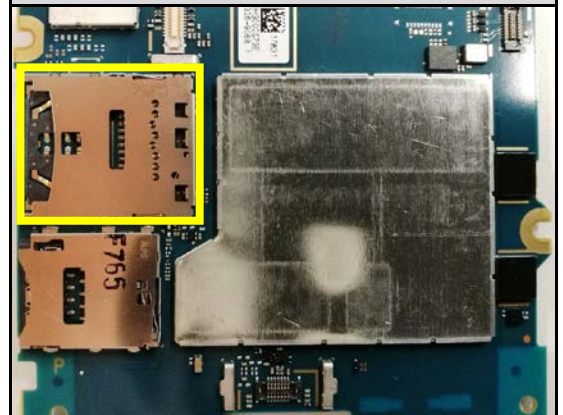
Replace if mechanical damaged.



Primary Side 4

CN4000

Replace if mechanical damaged (No SD Card is detected)

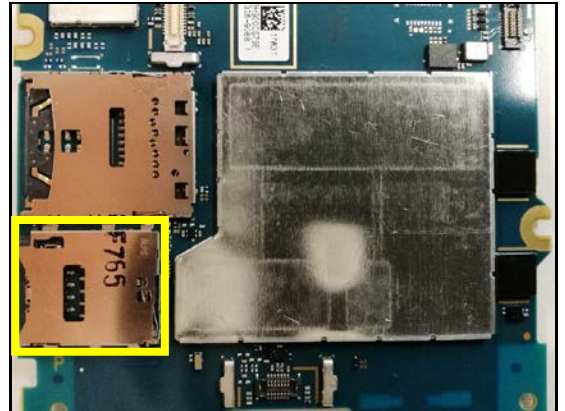


Additional Repair Info

Primary Side 5

CN4001

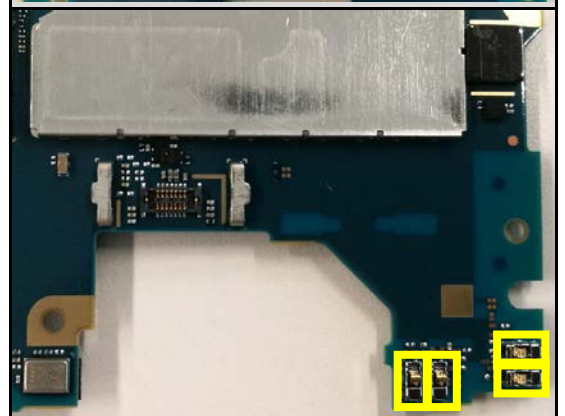
Replace if mechanical damaged (No network, restart, No SIM card is detected).



Primary Side 6

CN4402, CN4403, CN4404, CN4455

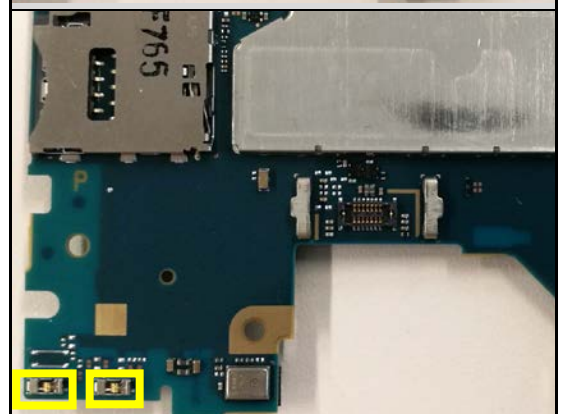
Replace if mechanical damaged. (No or bad network)



Primary Side 7

CN4452, CN4454

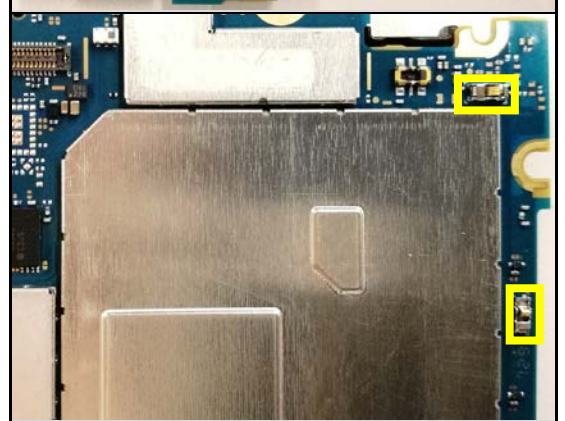
Replace if mechanical damaged. (No or bad network)



Primary Side 8

CN4863, CN4868

Replace if mechanical damaged.

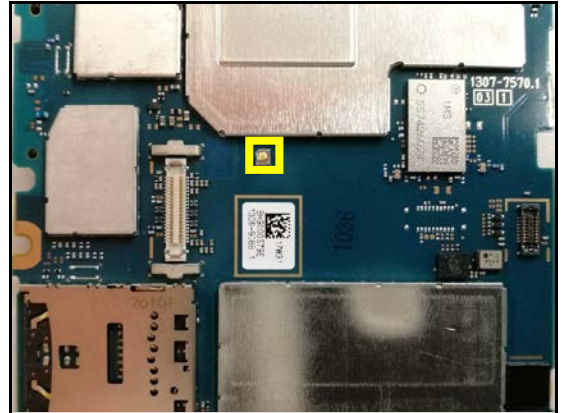


Additional Repair Info

Primary Side 9

CN4871

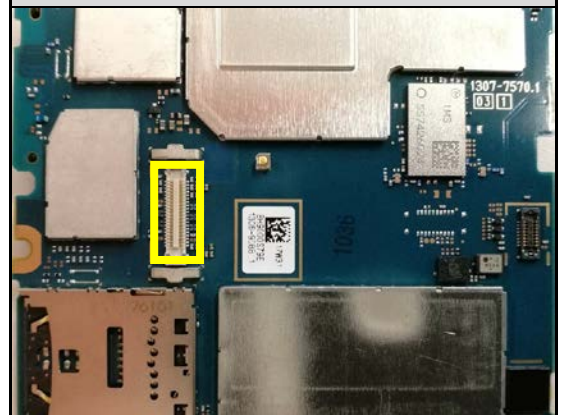
Replace if mechanical damaged.



Primary Side 10

CN7000

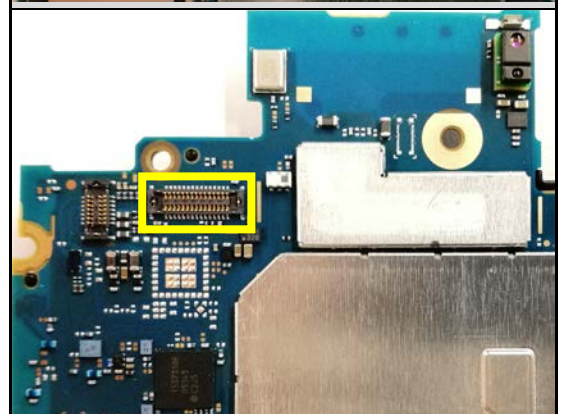
Replace if mechanical damaged (No display, No Touch function, any display malfunction).



Primary Side 11

CN7301

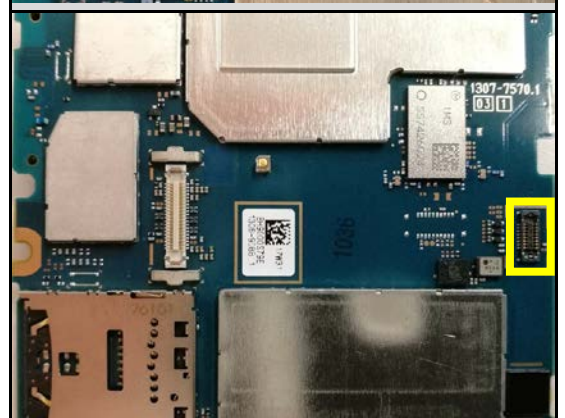
Replace if mechanical damaged (Front Camera malfunctions).



Primary Side 12

CN9500

Replace if mechanical damaged (No Power, Camera Key malfunction).

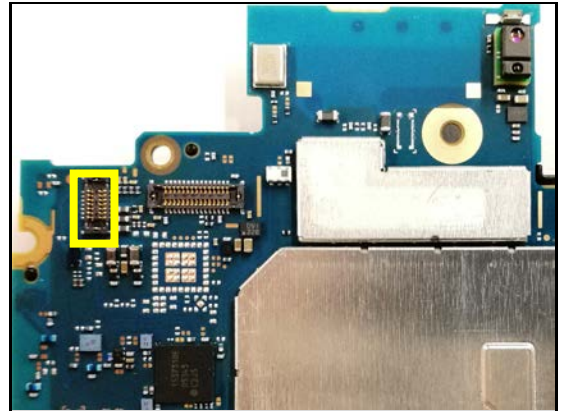


Additional Repair Info

Primary Side 13

CN9503

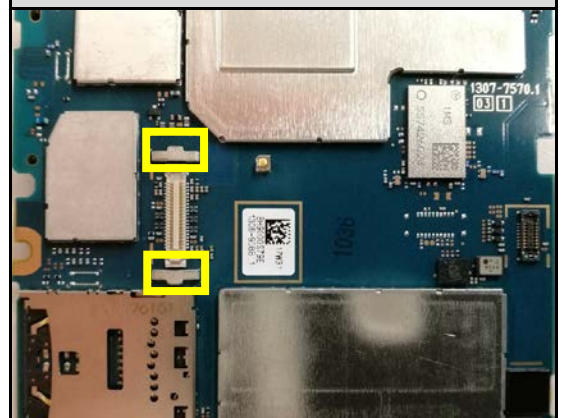
Replace if mechanical damaged (no sound from Audio Jack).



Primary Side 14

E7000, E7001

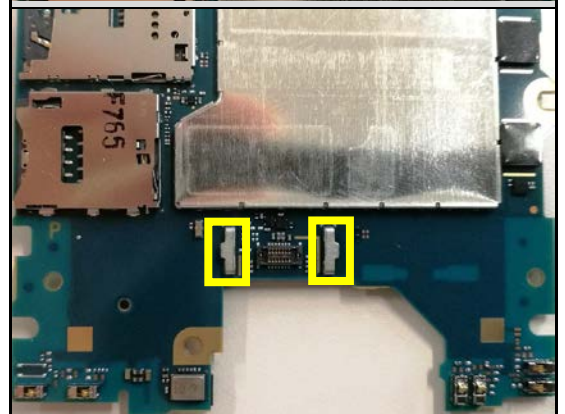
Replace if mechanical damaged.



Primary Side 15

E7002, E7003

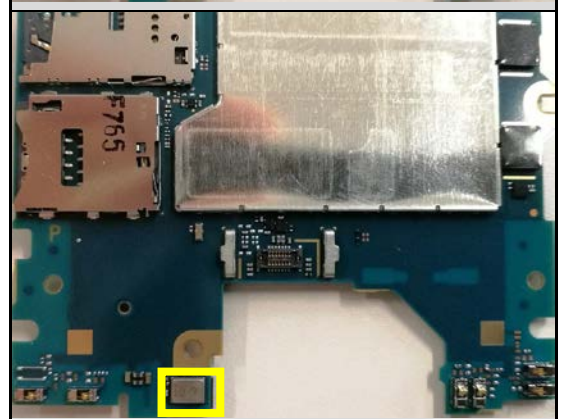
Replace if mechanical damaged.



Primary Side 16

MC3001

Replace if mechanical damaged (1st Mic defect).

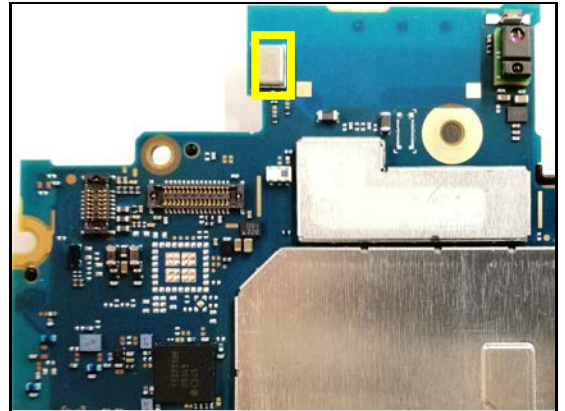


Additional Repair Info

Primary Side 17

MC3002

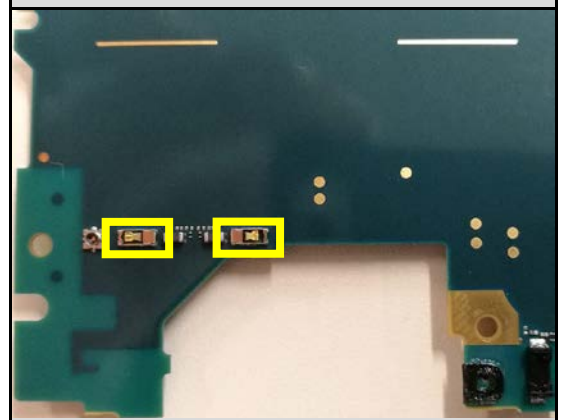
Replace if mechanical damaged (2nd Mic defect).



Secondary Side 1

CN3503, CN3504

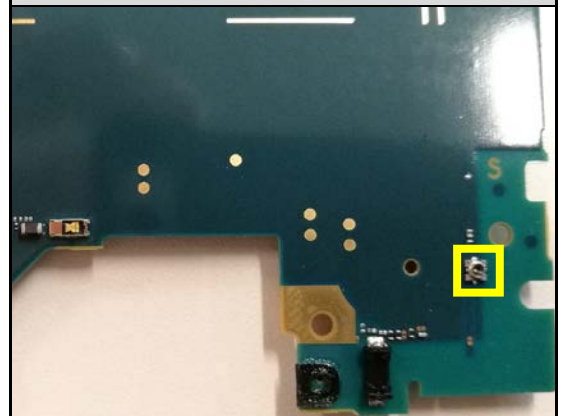
Replace if mechanical damaged. (no/bad sound of bottom speaker.)



Secondary Side 2

CN4411

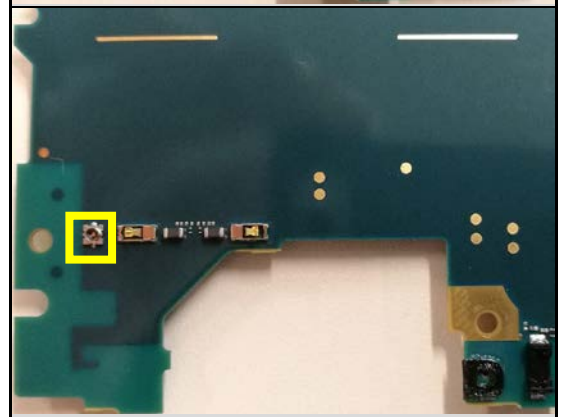
Replace if mechanical damaged.



Secondary Side 3

CN4421

Replace if mechanical damaged.

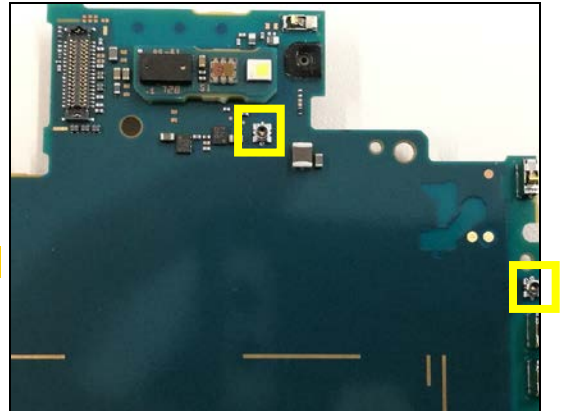


Additional Repair Info

Secondary Side 4

CN4611, CN4621

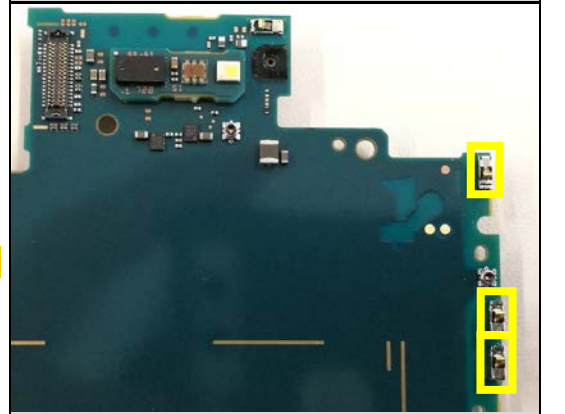
Replace if mechanical damaged.



Secondary Side 5

CN4651, CN4652, CN4655

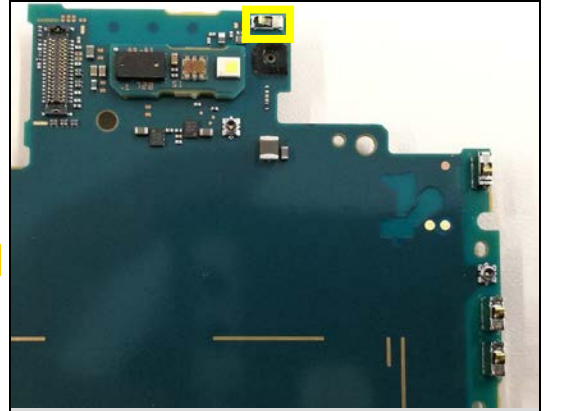
Replace if mechanical damaged. (No or bad network)



Secondary Side 6

CN4653

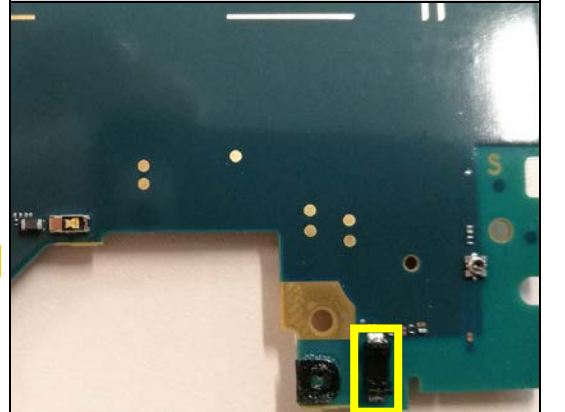
Replace if mechanical damaged. (No or bad network)



Secondary Side 7

CN5103

Replace if mechanical damaged. (No vibration.)

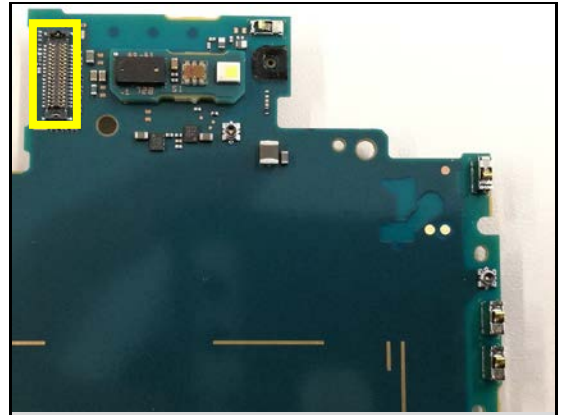


Additional Repair Info

Secondary Side 8

CN7300

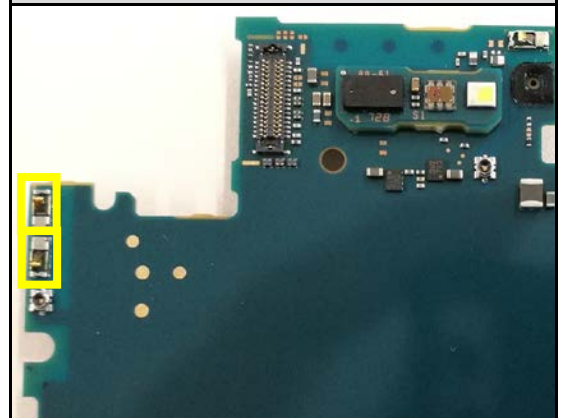
Replace if mechanical damaged (Main Camera malfunctions).



Secondary Side 9

CN8000, 8001

Replace if mechanical damaged. (No or bad network)



Secondary Side 10

CN8006

Replace if mechanical damaged.



Secondary Side 11

CN8041, CN8042

Replace if mechanical damaged. (No or bad network)

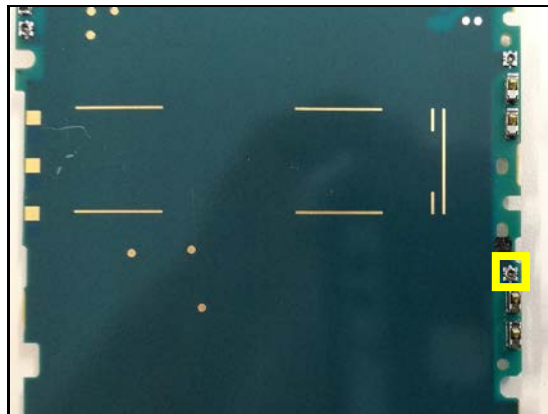


Additional Repair Info

Secondary Side 12

CN8071

Replace if mechanical damaged.



Secondary Side 13

CN8650, CN8651

Replace if mechanical damaged (NFC malfunction).



5 Revision History

Rev.	Date	Changes/Comments
1	2017-Sep-15	Initial release